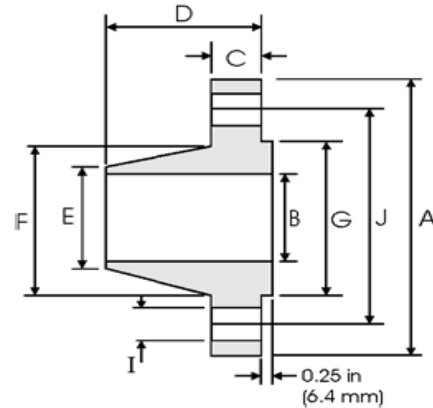


WELDNECK FLANGES ACC TO ANSI B16.5



Class 600 lb

| Pipe | Flange Data | | | | Hub Data | | Raised Face | Drilling Data | | | Weight | |
|-------------------|------------------|------------------|------------------------------|----------------------|----------------|------------------------|----------------|----------------|-----------------|--------------------|----------------|-----------------------------|
| Nominal Pipe Size | A | B | C | D | E | F | G | H | I | J | kg/ piece | |
| | Outside Diameter | Overall Diameter | Inside Diameter | Flange Thickness min | Overall Length | Diameter at Weld Bevel | Hub Diameter | Face Diameter | Number of Holes | Bolt Hole Diameter | | Diameter of Circle of Holes |
| | in mm | in mm | in mm | in mm | in mm | in mm | in mm | in mm | | in mm | | in mm |
| 1/2 | 0.840 21.30 | 3.750 95.30 | To be specified by Purchaser | 0.560 14.20 | 2.060 52.30 | 0.840 21.30 | 1.500 38.10 | 1.380 35.00 | 4 | 0.620 15.70 | 2.620 66.55 | 0.87 |
| 3/4 | 1.050 26.70 | 4.620 117.3 | | 0.620 15.70 | 2.250 57.15 | 1.050 26.70 | 1.880 47.80 | 1.690 42.90 | 4 | 0.750 19.10 | 3.250 82.60 | 1.45 |
| 1 | 1.315 33.40 | 4.880 124.0 | | 0.690 17.50 | 2.440 62.00 | 1.320 33.50 | 2.120 53.80 | 2.000 50.80 | 4 | 0.750 19.10 | 3.500 88.90 | 1.76 |
| 1 1/4 | 1.660 42.20 | 5.250 133.4 | | 0.810 20.60 | 2.620 66.55 | 1.660 42.20 | 2.500 63.50 | 2.500 63.50 | 4 | 0.750 19.10 | 3.880 98.60 | 2.49 |
| 1 1/2 | 1.900 48.30 | 6.120 155.4 | | 0.880 22.40 | 2.750 69.85 | 1.900 48.30 | 2.750 69.85 | 2.880 73.15 | 4 | 0.880 22.40 | 4.500 114.3 | 3.49 |
| 2 | 2.375 60.30 | 6.500 165.1 | | 1.000 25.40 | 2.880 73.15 | 2.380 60.45 | 3.310 84.10 | 3.620 91.90 | 8 | 0.750 19.10 | 5.000 127.0 | 4.36 |
| 2 1/2 | 2.875 73.00 | 7.500 190.5 | | 1.120 28.40 | 3.120 79.25 | 2.880 73.15 | 3.940 100.1 | 4.120 104.6 | 8 | 0.880 22.40 | 5.880 149.4 | 6.43 |
| 3 | 3.500 88.90 | 8.250 209.6 | | 1.250 31.75 | 3.250 82.60 | 3.500 88.90 | 4.620 117.3 | 5.000 127.0 | 8 | 0.880 22.40 | 6.620 168.1 | 8.53 |
| 3 1/2 | 4.000 101.6 | 9.000 228.6 | | 1.380 35.10 | 3.380 85.90 | 4.000 101.6 | 5.250 133.4 | 5.500 139.7 | 8 | 1.000 25.40 | 7.250 184.2 | 10.7 |
| 4 | 4.500 114.3 | 10.75 273.1 | | 1.500 38.10 | 4.000 101.6 | 4.500 114.3 | 6.000 152.4 | 6.190 157.2 | 8 | 1.000 25.40 | 8.500 215.9 | 17.4 |
| 5 | 5.563 141.3 | 13.00 330.2 | | 1.750 44.50 | 4.500 114.3 | 5.560 141.2 | 7.440 189.0 | 7.310 185.7 | 8 | 1.120 28.40 | 10.50 266.7 | 29.2 |
| 6 | 6.625 168.3 | 14.00 355.6 | | 1.880 47.80 | 4.620 117.3 | 6.630 168.4 | 8.750 222.3 | 8.500 215.9 | 12 | 1.120 28.40 | 11.50 292.1 | 34.9 |
| 8 | 8.625 219.1 | 16.50 419.1 | | 2.190 55.60 | 5.250 133.4 | 8.630 219.2 | 10.75 273.1 | 10.62 269.7 | 12 | 1.250 31.75 | 13.75 349.3 | 53.9 |
| 10 | 10.75 273.0 | 20.00 508.0 | | 2.500 63.50 | 6.000 152.4 | 10.75 273.0 | 13.50 342.9 | 12.75 323.8 | 16 | 1.380 35.10 | 17.00 431.8 | 86.5 |
| 12 | 12.75 323.8 | 22.00 558.8 | | 2.620 66.55 | 6.120 155.4 | 12.75 323.8 | 15.75 400.1 | 15.00 381.0 | 20 | 1.380 35.10 | 19.25 489.0 | 103 |
| 14 | 14.00 355.6 | 23.75 603.3 | | 2.750 69.85 | 6.500 165.1 | 14.00 355.6 | 17.00 431.8 | 16.25 412.7 | 20 | 1.500 38.10 | 20.75 527.1 | 122 |
| 16 | 16.00 406.4 | 27.00 685.8 | | 3.000 76.20 | 7.000 177.8 | 16.00 406.4 | 19.50 495.3 | 18.50 469.9 | 20 | 1.620 41.10 | 23.75 603.3 | 170 |
| 18 | 18.00 457.2 | 29.25 743.0 | | 3.250 82.60 | 7.250 184.2 | 18.00 457.2 | 21.50 546.1 | 21.00 533.4 | 20 | 1.750 44.50 | 25.75 654.1 | 204 |
| 20 | 20.00 508.0 | 32.00 812.8 | | 3.500 88.90 | 7.500 190.5 | 20.00 508.0 | 24.00 609.6 | 23.00 584.2 | 24 | 1.750 44.50 | 28.50 723.9 | 254 |
| 24 | 24.00 609.6 | 37.00 939.8 | | 4.000 101.6 | 8.000 203.2 | 24.00 609.6 | 28.25 717.6 | 27.25 692.1 | 24 | 2.000 50.80 | 33.00 838.2 | 358 |

Notes

- Dimension B corresponds to the pipe inside diameter. Values quoted assume 40S/Standard wall thickness.
- Weights are based on manufacturer's data and are approximate.