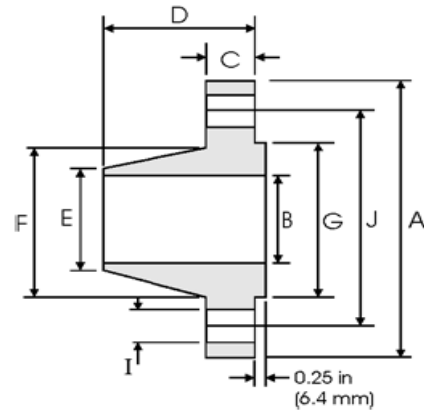




WELDNECK FLANGES ACC TO ANSI B16.5



Class 1500 lb

Nominal Pipe Size	Pipe		Flange Data				Hub Data		Raised Face	Drilling Data			Weight
		A	B	C	D	E	F	G	H	I	J		
	Outside Diameter	Overall Diameter	Inside Diameter	Flange Thickness min	Overall Length	Diameter at Weld Bevel	Hub Diameter	Face Diameter	Number of Holes	Bolt Hole Diameter	Diameter of Circle of Holes	kg/ piece	
in mm	in mm	in mm	in mm	in mm	in mm	in mm	in mm	in mm		in mm	in mm		
1/2	0.840	4.750	To be specified by Purchaser	0.880	2.380	0.840	1.500	1.380	4	0.880	3.250	1.87	
	21.30	120.6		22.30	60.45	21.30	38.10	35.00		22.30	82.50		
3/4	1.050	5.120		1.000	2.750	1.050	1.750	1.690	4	0.880	3.500	2.56	
	26.70	130.0		25.40	69.85	26.70	44.00	42.90		22.30	88.90		
1	1.315	5.880		1.120	2.880	1.320	2.060	2.000	4	1.000	4.000	3.74	
	33.40	149.3		28.40	73.15	33.50	52.30	50.80		25.40	101.6		
1 1/4	1.660	6.250		1.120	2.880	1.660	2.500	2.500	4	1.000	4.380	4.33	
	42.20	158.7		28.40	73.15	42.20	63.50	63.50		25.40	111.2		
1 1/2	1.900	7.000		1.250	3.250	1.900	2.750	2.880	4	1.120	4.880	5.94	
	48.30	177.8		31.70	82.50	48.30	69.85	73.15		28.40	123.9		
2	2.375	8.500		1.500	4.000	2.380	4.120	3.620	8	1.000	6.500	10.8	
	60.30	215.9		38.10	101.6	60.45	104.6	91.90		25.40	165.1		
2 1/2	2.875	9.620		1.620	4.120	2.880	4.880	4.120	8	1.120	7.500	15.0	
	73.00	244.3		41.10	104.6	73.15	123.9	104.6		28.40	190.5		
3	3.500	10.50		1.880	4.620	3.500	5.250	5.000	8	1.250	8.000	19.9	
	88.90	266.7		47.70	177.3	88.90	133.3	127.0		31.70	203.2		
4	4.500	12.25		2.120	4.880	4.500	6.380	6.190	8	1.380	9.500	29.9	
	114.3	311.1		53.80	123.9	114.3	162.0	157.2		35.00	241.3		
5	5.563	14.75		2.880	6.120	5.560	7.750	7.310	8	1.620	11.50	55.4	
	141.3	374.6		73.15	155.4	141.2	196.8	185.7		41.10	292.1		
6	6.625	15.50	3.250	6.750	6.630	9.000	8.500	12	1.500	12.50	68.4		
	168.3	393.7	82.50	171.4	168.4	228.6	215.9		38.10	317.5			
8	8.625	19.00	3.620	8.380	8.630	11.50	10.62	12	1.750	15.50	117		
	219.1	482.6	91.90	212.8	219.2	292.1	269.7		44.40	393.7			
10	10.75	23.00	4.250	10.00	10.75	14.50	12.75	12	2.000	19.00	194		
	273.0	584.2	107.9	254.0	273.0	368.3	323.8		50.80	482.6			
12	12.75	26.50	4.880	11.12	12.75	17.75	15.00	16	2.120	22.50	288		
	323.8	673.1	123.9	282.4	323.8	450.8	381.0		53.80	571.5			
14	14.00	29.50	5.250	11.75	14.00	19.50	16.25	16	2.380	25.00	380		
	355.6	749.3	133.3	298.4	355.6	495.3	412.7		60.45	635.0			
16	16.00	32.50	5.750	12.25	16.00	21.75	18.50	16	2.620	27.75	485		
	406.4	825.5	146.0	311.1	406.4	552.4	469.9		66.55	704.8			
18	18.00	36.00	6.380	12.88	18.00	23.50	21.00	16	2.880	30.50	644		
	457.2	914.4	162.0	327.1	457.2	596.9	533.4		73.15	774.7			
20	20.00	38.75	7.000	14.00	20.00	25.25	23.00	16	3.120	32.75	775		
	508.0	984.2	177.8	355.6	508.0	641.3	584.2		79.25	831.8			
24	24.00	46.00	8.000	16.00	24.00	30.00	27.25	16	3.620	39.00	1232		
	609.6	1168.4	203.2	406.4	609.6	762.0	692.1		91.90	990.6			

Notes

- Dimension B corresponds to the pipe inside diameter. Values quoted assume 40S/Standard wall thickness.
- Weights are based on manufacturer's data and are approximate.