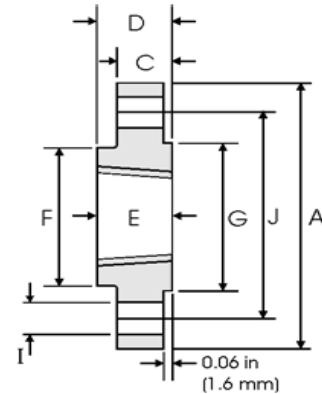




THREADED FLANGES ACC TO ANSI B16.5



Class 150 lb

| Nominal Pipe Size | Pipe | Flange Data | | | | Hub | Raised Face | Drilling Data | | | Weight |
|-------------------|---|------------------|----------------------|----------------|---------------------|----------------|----------------|-----------------|--------------------|-----------------------------|---|
| |  | A | C | D | E | F | G | H | I | J |  |
| | Outside Diameter | Overall Diameter | Flange Thickness min | Overall Length | Threaded length min | Hub Diameter | Face Diameter | Number of Holes | Bolt Hole Diameter | Diameter of Circle of Holes | kg/ piece |
| | in mm | in mm | in mm | in mm | in mm | in mm | in mm | | in mm | in mm | |
| 1/2 | 0.840 21.30 | 3.500 88.90 | 0.440 11.20 | 0.620 15.70 | 0.620 15.70 | 1.190 30.20 | 1.380 35.10 | 4 | 0.620 15.70 | 2.380 60.45 | 0.39 |
| 3/4 | 1.050 26.70 | 3.880 98.60 | 0.500 12.70 | 0.620 15.70 | 0.620 15.70 | 1.500 38.10 | 1.690 42.90 | 4 | 0.620 15.70 | 2.750 69.85 | 0.56 |
| 1 | 1.315 33.40 | 4.250 108.0 | 0.560 14.20 | 0.690 17.50 | 0.690 17.50 | 1.940 49.30 | 2.000 50.80 | 4 | 0.620 15.70 | 3.120 79.25 | 0.78 |
| 1 1/4 | 1.660 42.20 | 4.620 117.3 | 0.620 15.70 | 0.810 20.60 | 0.810 20.60 | 2.310 58.70 | 2.500 63.50 | 4 | 0.620 15.70 | 3.500 88.90 | 1.03 |
| 1 1/2 | 1.900 48.30 | 5.000 127.0 | 0.690 17.50 | 0.880 22.40 | 0.880 22.30 | 2.560 65.00 | 2.880 73.15 | 4 | 0.620 15.70 | 3.880 98.60 | 1.32 |
| 2 | 2.375 60.30 | 6.000 152.4 | 0.750 19.10 | 1.000 25.40 | 1.000 25.40 | 3.060 77.70 | 3.620 91.90 | 4 | 0.750 19.10 | 4.750 120.7 | 2.06 |
| 2 1/2 | 2.875 73.00 | 7.000 177.8 | 0.880 22.40 | 1.120 28.40 | 1.120 28.40 | 3.560 90.40 | 4.120 104.6 | 4 | 0.750 19.10 | 5.500 139.7 | 3.28 |
| 3 | 3.500 88.90 | 7.500 190.5 | 0.940 23.90 | 1.190 30.20 | 1.190 30.20 | 4.250 108.0 | 5.000 127.0 | 4 | 0.750 19.10 | 6.000 152.4 | 3.85 |
| 3 1/2 | 4.000 101.6 | 8.500 215.9 | 0.940 23.90 | 1.250 31.75 | 1.250 31.75 | 4.810 122.2 | 5.500 139.7 | 8 | 0.750 19.10 | 7.000 177.8 | 4.81 |
| 4 | 4.500 114.3 | 9.000 228.6 | 0.940 23.90 | 1.310 33.30 | 1.310 33.30 | 5.310 134.9 | 6.190 157.2 | 8 | 0.750 19.10 | 7.500 190.5 | 5.30 |
| 5 | 5.563 141.3 | 10.00 254.0 | 0.940 23.90 | 1.440 36.60 | 1.440 36.60 | 6.440 163.6 | 7.310 185.7 | 8 | 0.880 22.40 | 8.500 215.9 | 6.07 |
| 6 | 6.625 168.3 | 11.00 279.4 | 1.000 25.40 | 1.560 39.60 | 1.560 39.60 | 7.560 192.0 | 8.500 215.9 | 8 | 0.880 22.40 | 9.500 241.3 | 7.45 |
| 8 | 8.625 219.1 | 13.50 342.9 | 1.120 28.40 | 1.750 44.50 | 1.750 44.50 | 9.690 246.1 | 10.62 269.7 | 8 | 0.880 22.40 | 11.75 298.5 | 12.1 |
| 10 | 10.75 273.0 | 16.00 406.4 | 1.190 30.20 | 1.940 49.30 | 1.940 49.30 | 12.00 304.8 | 12.75 323.9 | 12 | 1.000 25.40 | 14.25 362.0 | 16.5 |
| 12 | 12.75 323.8 | 19.00 482.6 | 1.250 31.75 | 2.190 55.60 | 2.190 55.60 | 14.38 365.3 | 15.00 381.0 | 12 | 1.000 25.40 | 17.00 431.8 | 26.2 |
| 14 | 14.00 355.6 | 21.00 533.4 | 1.380 35.10 | 2.250 57.15 | 2.250 57.15 | 15.75 400.1 | 16.25 412.7 | 12 | 1.120 28.40 | 18.75 476.3 | 34.6 |
| 16 | 16.00 406.4 | 23.50 596.9 | 1.440 36.60 | 2.500 63.50 | 2.500 63.50 | 18.00 457.2 | 18.50 469.9 | 16 | 1.120 28.40 | 21.25 539.8 | 44.8 |
| 18 | 18.00 457.2 | 25.00 635.0 | 1.560 39.60 | 2.690 68.30 | 2.690 68.30 | 19.88 505.0 | 21.00 533.4 | 16 | 1.250 31.75 | 22.75 577.9 | 48.9 |
| 20 | 20.00 508.0 | 27.50 698.5 | 1.690 42.90 | 2.880 73.15 | 2.880 73.15 | 22.00 558.8 | 23.00 584.2 | 20 | 1.250 31.75 | 25.00 635.0 | 61.9 |
| 24 | 24.00 609.6 | 32.00 812.8 | 1.880 47.80 | 3.250 82.60 | 3.250 82.60 | 26.12 663.4 | 27.25 692.2 | 20 | 1.380 35.10 | 29.50 749.3 | 86.9 |

Notes

- The thread conforms to ASME B1.20.1 NTP threads as described in Section 10. (The only exceptions are small male and female plain face threaded flanges which use NPSL recout threads.)
- Class 150 threaded flanges are made without a counterbore. Threads are chamfered to the major diameter (approx.) at an angle of 45° (approx.) at the back of the flange.